

<p>OMR-160 150 bar PN: 682150 Std. drum 682474 Long drum</p>	<p>OMP-160 175 bar PN: 682030 Std. drum 682169 Long drum</p>
--	--

Introduction

► **Feature**

- Line pull (1st layer): 9,070 kg / 20,000 lb
- Line speed (1st layer): 7.1 mpm (23 fpm) at 60 l / min (15.9 g / min)
- Operation pressure: 150 bar (2,175 psi)
175 bar (2,540 psi)
- Brake: Multi-disc brake and counterbalance valve providing full 100% braking
- Clutch (freespooling): output shaft disengaged
- Recommended wire rope: 14 mm x 43 m (9/16" x 141'),for Std. drum
14 mm x 80 m (9/16" x 262'),for Long drum
1,960 N/mm² breaking strength of 137 kN is required for SAE ratings

16 mm x 30 m (5/8" x 98'), for Std. drum,
16 mm x 55 m (5/8" x 180'),for Long drum
1,960 N/mm² breaking strength of 179 kN is required for EN-14492-1 ratings
- Hydraulic system: PTO/power take off unit driven pump

► **Unpacking**

- Winch assembly..... 1pc
- Roller fairlead..... 1pc
- Counterbalance valve..... 1pc
- Cable tensioner..... 1pc

► **Read this manual carefully**

You should carefully read and understand this manual before operating it. Careless winch operation may result in personal injury hazards or property damage.

► **Information requesting or parts ordering**

Please specify the followings information:

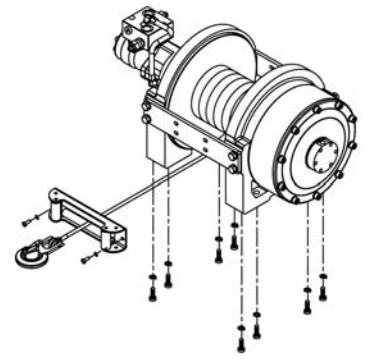
- Winch PN
- Serial number
- Quantity for each part
- Part description
- Replacement part number

Installation

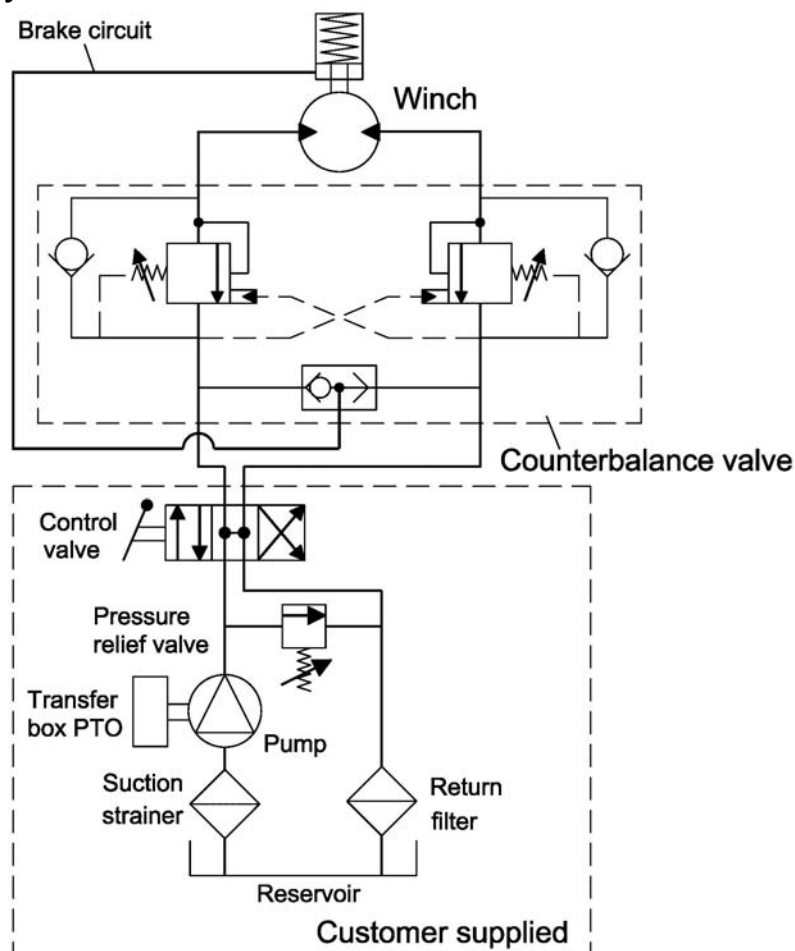
Before using the winch, make sure all components have no corrosion or damaged; the environment should be clear and dry.

► Mounting

- Winch shall be mounted on a flat and hard surface.
- Winch should be mounted as closed to center and as perpendicular as possible to the direction of the line pull.
- Wire rope shall be wound in an under-wound orientation only.
- Eight (8) M16 x 40, 12.9 grade high tensile steel bolts must be used in order to sustain the loads imposed on the winch.
- Two (2) M10 X 25, 12.9 grade high tensile steel bolts must be used to fasten the roller fairlead to the mounting channel.
- It is always preferred to use both tie bars in the final installed configuration.
- If there is a rope pileup on one end of the drum, reverse the winch to relieve the load and move your anchor point further to the center of the vehicle. Then you can rewind for a neat layer of the rope.



► Hydraulic System



(Powered by PTO / power take off unit driven pump)

The installation of the counterbalance valve supplied is required for 100% braking

Warning

- This winch shall only be used for vehicle recovery or for pulling and lowering boats off trailers.
- The rated line pull and speed are based on the first layer of rope on the drum.
- The rope winding on the drum shall remain 5 wraps from the drum.

Warranty

Comeup Industries Inc. takes the responsibility for all parts and components to be free from defects in materials and workmanship appearing under normal use for one year from the date of purchase.

Parts List

Item No.	Description	Part No.	Qty
1	Hydraulic motor kit, OMP-160	882186	1
	Hydraulic motor kit, OMR-160	882181	
2	Multi-disc brake kit	881971	1
3	Motor support rack	882142	1
4	Motor coupling kit	881973	1
5	Drum bushing	880187	2
6	Drum kit, Std. drum	882143	1
	Drum kit, Long drum	882182	
7-1	Tie bar kit, Std. drum	881975	2
	Tie bar kit, Long drum	882189	
8	Gearbox support rack kit	882144	1
9	2 nd stage carrier	882145	1
10	1 st stage carrier	882146	1
11	1 st shaft kit, Std. drum	882147	1
	1 st shaft kit, Long drum	882183	
12	1 st gear	882052	1
13	1 st & 2 nd ring gear kit	882148	1
14	Gearbox rear cover kit	882149	1
15	Air inlet cover kit	881982	1
16	Cable tensioner, Std. drum	881983	1
	Cable tensioner, Long drum	882195	
17	Roller fairlead, Std. drum	880160	1
	Roller fairlead, Long drum	882238	

Winch Assembly

