

PN :445110	110V	445120	110V
445220	220V	445225	220V
		445931	220V

Introduction

► Feature

Lifting capacity:	500 kg
Lifting height:	3 m
Line speed:	6.5 m/min
Motor output:	750w x 9.5A at 100-120V ; 750w x 4.5A at 200-240V
Brake:	Dual brakes of double mechanical ratchet pawls and a motor dynamic brake
Control:	Pendant switch powers the hoist

► Unpacking

• Hoist assembly	1pc
• Load chain 6.3 mm x 3.5 m w/hook tackle	1pc
• Load chain 6.3 mm x 4.3 m w/hook tackle for PN 445931	1pc
• Power lead 2.0 mm ² x 3C x 3m w/2 flat pins plug for PN:445110.445225.445931	1pc
• Power lead 1.5 mm ² x 3C x 3m w/3 round pins plug for PN:445120.445220	1pc
• Pendant switch PB-317 w/cord 1.25 mm ² x 6C x 3m	1pc

► Read this manual carefully

You should carefully read and understand this manual before operating it. Careless hoist operation may result in personal injury hazards or property damage.

► Information requesting or parts ordering

Please specify the followings information:

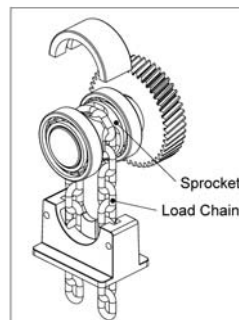
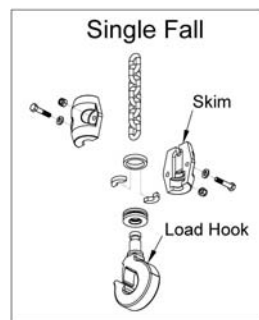
- | | | |
|-----------------|--------------------------|--------------------|
| • Hoist PN | • Quantity for each part | • Part description |
| • Serial number | • Replacement part | |

Installation

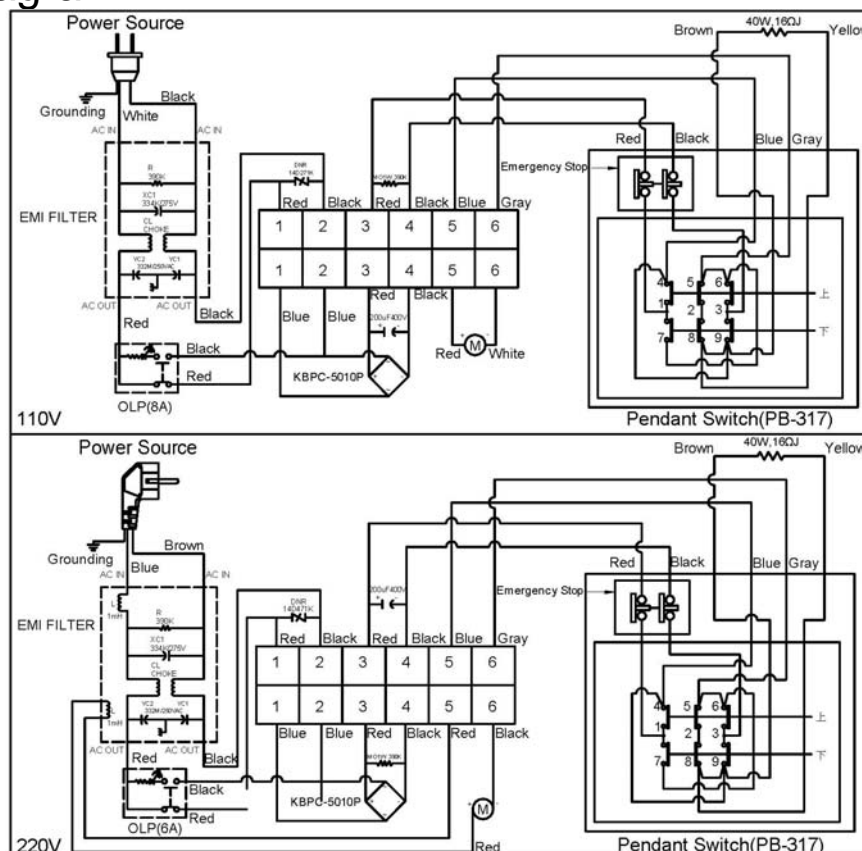
Before using the hoist, make sure all electrical components have no corrosion or damaged; the environment should be clear and dry.

► Load Chain Replacement

- 1). Be sure that the replacement chain is the exact size, grade and constructions as the original chain. The new load chain must have an odd number links so that both its end links have the same orientation. Destroy the old chain to prevent its reuse.
- 2). When replacing load chain, check for wear on mating parts such as sprocket , and replace parts if necessary.
- 3). Remove all chain components including load hook kit from the old chain for reuse on new chain. Inspect and replace any damaged or worm parts.
- 4). Using a C-link to attach the new chain to the old end link on the no-load side. The new end link should be connected so the welded portion to pass over the sprocket.
- 5). Operate the hoist down to move the chain through the hoist body. Stop when a sufficient amount of new chain is accumulated on the load side.



► Wiring Diagram



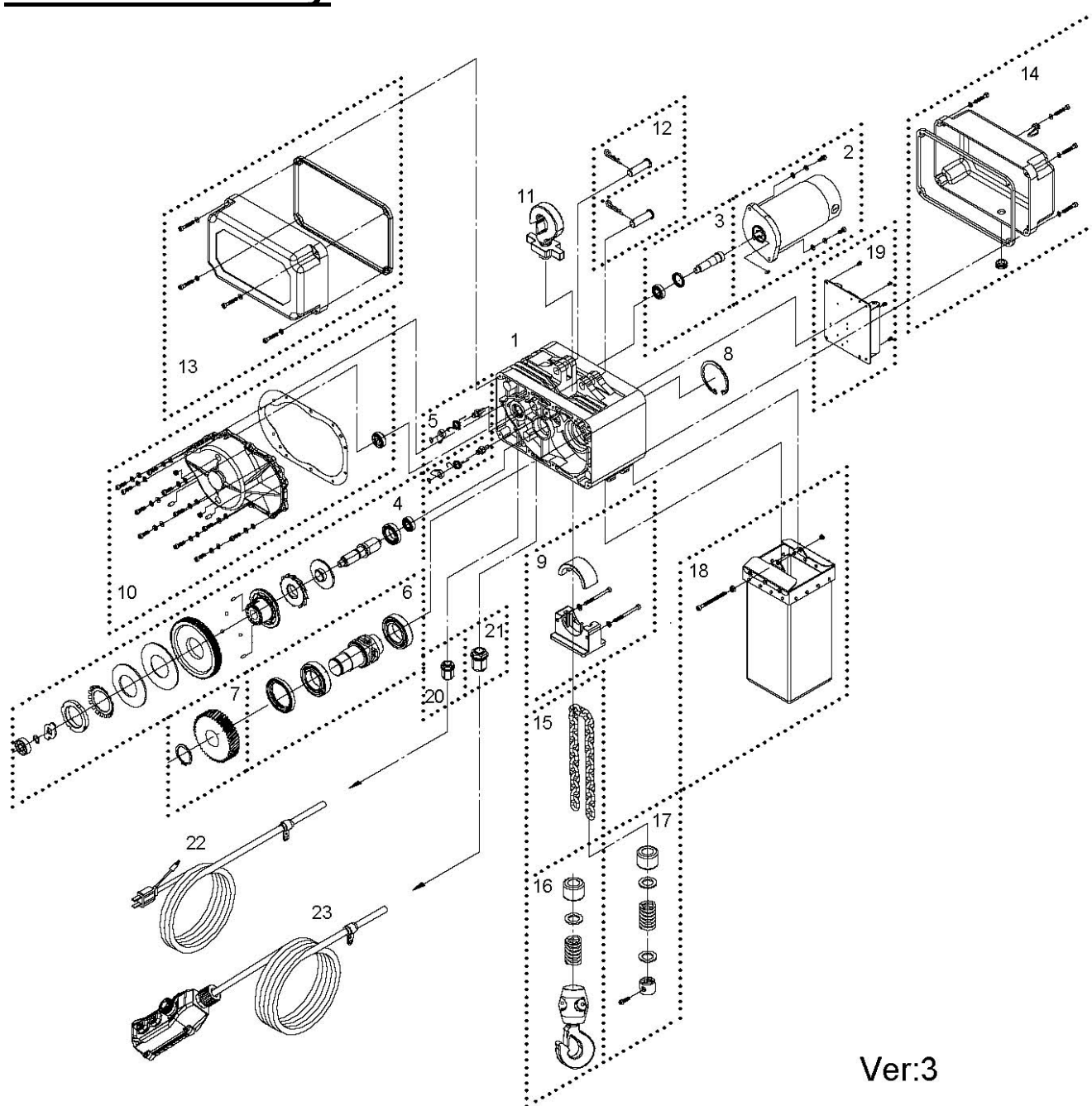
Warning

- The hoist is not intended to be used in any manner for the movement or lifting of personnel.

Parts List

Item No.	Description	Part No.	Qty
1	Gear box	881789	1
2	Motor kit 110V	881790	1
	Motor kit 220V	881791	
3	1 st pinion kit	881792	1
4	1 st gear kit	881793	1
5	Ratchet stopper kit	881794	2
6	Sprocket kit	881795	1
7	2 nd gear kit	881858	1
8	R-type retaining ring	881867	1
9	Sprocket protector kit	881796	1
10	Brake rear cover kit	881797	1
11	Hook suspension	881798	1
12	Head pin	881799	1
13	Gearbox rear cover kit	881857	1
14	Electric cover kit	881800	1
15	Load chain 3.5 m	881801	1
	Load chain 4.3 m for PN 445931	882090	1
16	Hook tackle	881803	1
17	Lift limiter	881805	1
18	Chain bag kit	881806	1
19	Control panel 110V	881807	1
	Control panel 220V	881808	
20	Cable gland AG-16	881809	1
21	Cable gland AG-20	881810	1
22	Power lead w/2 flat pins plug 110V/220V	881811	1
	Power lead w/3 round pins plug 110V/220V	881812	1
23	Remote control, PB-317	881813	1

Hoist Assembly



Ver:3